

# UTX3105-UTX3120, UTX4105-UTX4120

## SUPER FAST RECOVERY RECTIFIERS

### FEATURES:

- Available as "HR" (high reliability) screened per MIL-PRF-19500, JANTX level. Add "HR" suffix to base part number
- Available Non-RoHS (standard) or RoHS compliant (add PBF suffix)

### MAXIMUM RATINGS

| Characteristic   | 3 amp series   | 4 amp series |
|--|----------------|--------------|
| Maximum average DC output current<br>@ T <sub>A</sub> = 25°C | 3.0A           | 4.0A         |
| @ T <sub>A</sub> = 100°C                                     | 1.5A           | 2.0A         |
| Non-repetitive sinusoidal<br>Surge current (8.3ms)           | 60A            | 80A          |
| Operating temperature range                                  | -195 to +175°C |              |
| Storage temperature range                                    | -195 to +200°C |              |

### ELECTRICAL CHARACTERISTICS

| Part number | Peak inverse voltage | Maximum forward voltage drop | Maximum leakage current @ PIV |       | Maximum reverse recovery time * |
|-------------|----------------------|------------------------------|-------------------------------|-------|---------------------------------|
|             |                      |                              | 25°C                          | 100°C |                                 |
| UTX4105     | 50V                  | 1V @ 3 Adc                   | 5µA                           | 75µA  | 100ns                           |
| UTX4110     | 100V                 |                              |                               |       |                                 |
| UTX4115     | 150V                 |                              |                               |       |                                 |
| UTX4120     | 200V                 |                              |                               |       |                                 |
| UTX3105     | 50V                  | 1V @ 2 Adc                   | 5µA                           | 75µA  | 100ns                           |
| UTX3110     | 100V                 |                              |                               |       |                                 |
| UTX3115     | 150V                 |                              |                               |       |                                 |
| UTX3120     | 200V                 |                              |                               |       |                                 |

Recovery time is measured from 1A to 1A recovering to 0.5A.



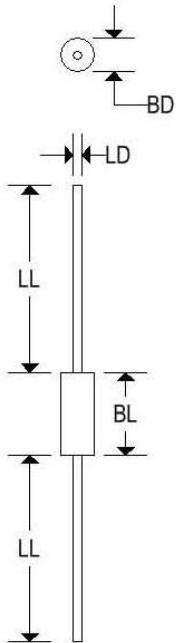
High-reliability discrete products  
and engineering services since 1977

# UTX3105-UTX3120, UTX4105-UTX4120

## SUPER FAST RECOVERY RECTIFIERS

### MECHANICAL CHARACTERISTICS

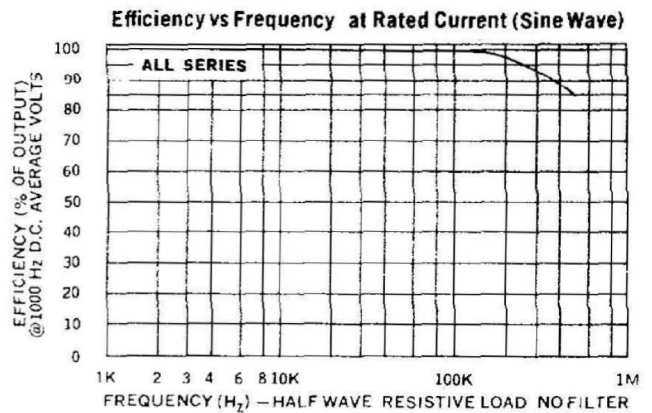
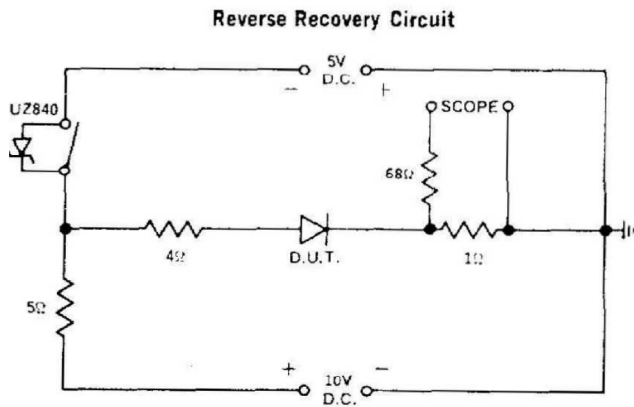
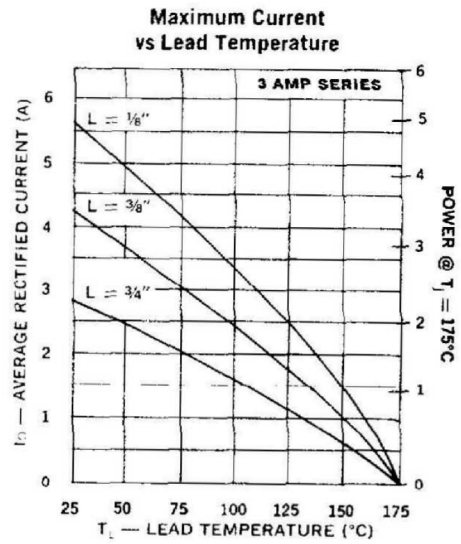
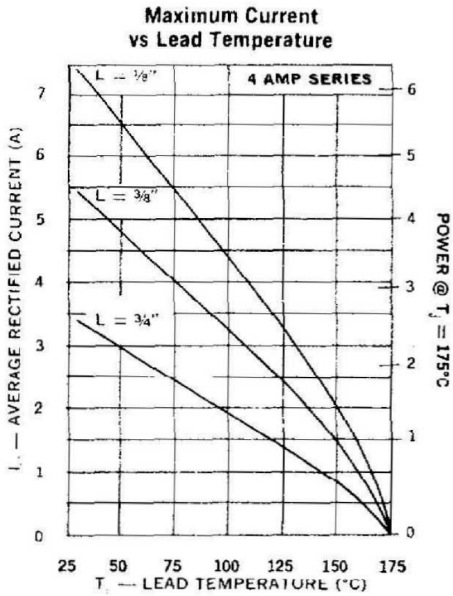
|                 |                             |
|-----------------|-----------------------------|
| <b>Case</b>     | Digi B                      |
| <b>Marking</b>  | Body painted, alpha-numeric |
| <b>Polarity</b> | Cathode band                |



|    | Digi B |       |             |       |
|----|--------|-------|-------------|-------|
|    | Inches |       | Millimeters |       |
|    | Min    | Max   | Min         | Max   |
| BD | -      | 0.135 | -           | 3.429 |
| BL | -      | 0.250 | -           | 6.350 |
| LD | 0.038  | 0.042 | 0.965       | 1.067 |
| LL | 0.975  | -     | 24.765      | -     |

# UTX3105-UTX3120, UTX4105-UTX4120

## SUPER FAST RECOVERY RECTIFIERS



# UTX3105-UTX3120, UTX4105-UTX4120

## SUPER FAST RECOVERY RECTIFIERS

